


**MILESTONES MATTER!**

EARLY CARE PROFESSIONALS AND FAMILIES  
WORKING TOGETHER FOR CHILDREN



1

---

---

---

---

---


---

---

---

**Agenda – Missouri Milestones Matter**

- GOALS and BENEFITS
- IMPLEMENTATION
- TALKING WITH PARENTS
- NEXT STEPS
- RESOURCES



2

---

---

---

---

---

---

---

---

**GOALS**

**LEARN THE SIGNS. ACT EARLY.**

- Identifying healthy developmental milestones
- Tracking children’s development
- Acting early if there are concerns

[www.cdc.gov/ncbddd/actearly/milestones](http://www.cdc.gov/ncbddd/actearly/milestones)

3

---

---

---

---

---

---

---

---

## Developmental Monitoring

- *Observing* the specific way a child plays, learns, acts, speaks and moves on a regular basis.
- *Tracking* a child's development using a standardized instrument.
- *Celebrating* strengths and *identifying* areas in need of additional support.

4

---

---

---

---

---

---

---

---

## Developmental Milestones



5

---

---

---

---

---

---

---

---

## The BENEFITS of Developmental Monitoring

- ❖ Increases understanding of child development.
- ❖ Parents know their children best and are accurate reporters.
- ❖ Monitoring with a checklist guides parents to access support when there are concerns.
- ❖ Early interventions provide practice, exposure, or specialized therapies.

6

---

---

---


---

---

---

---

---



- ❖ Most children are developing on track.
- ❖ Some children will need support.
- ❖ A few children will need referral for specialized support.

7

---

---

---

---

---

---

---

---

### Frequency of Developmentally Monitoring and Screening

- Developmental Monitoring or surveillance ongoing
- Validated developmental screening at 9, 18, and 24/30 month well child visits or when there is a concern
- Autism specific screen at 18 and 24 months
- Social and emotional screening at “regular intervals”

8

---

---

---

---

---

---

---

---

### Developmental Monitoring vs Developmental Screening

DEVELOPMENTAL MONITORING	DEVELOPMENTAL SCREENING
<p><b>What is it?</b> An on-going process, beginning at birth, that helps identify a child who may be at risk for developmental delay.</p>	<p><b>What is it?</b> A formal process of checking a child's recommended development at varying ages.</p>
<p><b>Who is involved?</b> Parents, early care and education professionals, and health care providers conduct the developmental monitoring.</p>	<p><b>Who is involved?</b> Early care and education professionals and health care providers administer screenings in collaboration with parents and caregivers.</p>
<p><b>How is it completed?</b> By conducting a brief review of developmental milestones to give families direction on how to support and encourage a child's continued growth and learning.</p>	<p><b>How is it completed?</b> By administering an evidence-based tool designed to identify developmental delays and the need for further evaluation.</p>

9

---

---

---

---

---

---

---

---

## Developmental Monitoring vs Developmental Screening

Developmental Monitoring		Developmental Screening	
WHO:	Early childhood professionals, parents, or other caregivers	WHO:	Healthcare provider, early childhood professional, or other trained provider
WHAT:	Look for developmental milestones	WHAT:	Look for developmental milestones
WHEN:	From birth to 5 years	WHEN:	Developmental Screening at 9, 18, and 30 months of age Autism Screening at 18 and 24 months of age
WHY:	To help you: → celebrate your child's development → talk about your child's progress with doctors and child care providers → learn what to expect next → identify any concerns early	WHY:	To find out: → if your child needs more help with development, because it is not always obvious to doctors, child care providers, or parents → if more developmental evaluations are recommended
HOW:	With easy, free checklists – get yours at <a href="http://www.cdc.gov/milestones">www.cdc.gov/milestones</a>	HOW:	With a formal, validated screening tool

10

---

---

---

---

---

---

---

---

---

---

## The Who of Developmental Monitoring

- Early care educators
- Medical providers
- Interventionists
- Home Visitors
- FAMILIES



11

---

---

---

---

---

---

---

---

---

---

## The Role of Early Care Professionals with Families

- ❖ A trusting partnership depends on ongoing communication and both partners sharing information about the child.
- ❖ When families trust the professionals in their child's world, they are more likely to engage and respond positively when conversations are challenging.
- ❖ **What practices do you use to build a trusting relationship with families?**

12

---

---

---

---

---

---

---

---

---

---

### CDC DOMAINS of Developmental Milestones

- Social/Emotional
- Language/Communication
- Cognitive (learning, thinking and problem solving)
- Movement/Physical Development

13

---

---

---

---

---

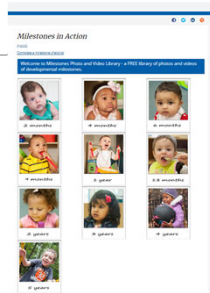
---

---

---

### Milestones in Action

<https://www.cdc.gov/ncbddd/actearly/milestones/milestones-in-action.html>



14

---

---

---

---

---

---

---

---

### PREPARING FOR IMPLEMENTATION

- Choosing the tools to use
  - Paper checklists
  - CDC's Milestones Tracker
- Process that fits your program
  - Frequency
  - Reporting
- Advertising/Communication



15

---

---

---

---

---

---

---

---



16

---

---

---

---

---

---

---

---

### Choosing a monitoring checklist

\* The CDC's developmental checklists follow the schedule for healthy child visits.

\* This table makes it easy to determine which checklist to use.

Choose Checklist:	For children in this age range:
2 month	2 months old, but not yet 4 months old
4 month	4 months old, but not yet 6 months old
6 month	6 months old, but not yet 9 months old
9 month	9 months old, but not yet 1 year old
1 year	1 year old, but not yet 18 months old
18 month	18 months old, but not yet 2 years old
2 year	2 years old, but not yet 3 years old
3 year	3 years old, but not yet 4 years old
4 year	4 years old, but not yet 5 years old
5 year	5 years old

17

---

---

---

---

---

---

---

---

### Milestones Tracker App

- Available for Apple and Android users.
- Includes photos and videos for each milestone.
- Completed on parents' schedule.
- Automatic reminders for next interval.

18

---

---

---

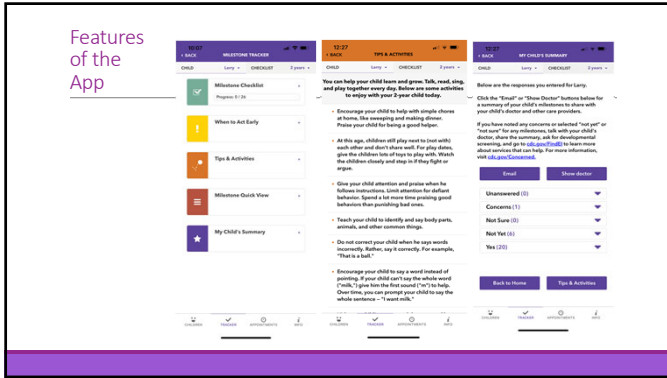
---

---

---

---

---



19

---

---

---

---

---

---

---

---

---

---

### Process: Frequency and Reporting

- How often will you review developmental checklists?
- How will you manage the reporting of a child's progress?
- Time, staffing, and family support are all considerations.

20

---

---

---

---

---

---

---

---

---

---

### Advertising and Communication

- How will you inform the community about Missouri Milestones Matter?
- How will you maintain interest in the program?
- Emphasize the benefits of developmental monitoring and the ease with which it can be done. Remind parents that they are the experts on their child.

21

---

---

---

---

---

---

---

---

---

---

## IMPLEMENTATION

- Monitoring
- Talking with families
- Taking next steps
- Continuing to communicate, monitor, and educate

22

---

---

---

---

---

---

---

## Monitoring Development in your program



23

---

---

---

---

---

---

---

## Talking with Families

- Relationship
- Recognize strengths
- Recognize the goals and values of the family

24

---

---

---

---

---

---

---





## Community Resource Worksheet

The form is titled 'Community Resource Worksheet' and includes a logo for 'Community Resource Worksheet' at the top right. It is divided into three main sections, each with a title and a table for recording information:

- Health Services:** Includes a table with columns for 'Name', 'Address', and 'Phone'.
- Family Programs:** Includes a table with columns for 'Name', 'Address', and 'Phone'.
- Community Resources:** Includes a table with columns for 'Name', 'Address', and 'Phone'.

Below the tables, there are several paragraphs of text providing instructions on how to use the worksheet, such as 'This worksheet is designed to help you record information about community resources that you have identified for your program.' and 'This worksheet is designed to help you record information about community resources that you have identified for your program.'

28

---

---

---

---

---

---

---

---

---

---

## How to support families through next steps?

1. Stay in touch
2. Ask if they need assistance making contact for any suggested referrals
3. Remind families of their choices.
4. Talking with families – (pg 10)

29

---

---

---

---

---

---

---

---

---

---

## Continuing to communicate, monitor, and educate

- Remind parents to monitor their child's development.
- Use the checklists in your program and check-in with parents on progress.
- Talk to parents about how you are supporting their children's development.

30

---

---

---

---

---

---

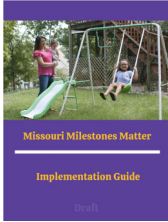
---

---

---

---

## Implementation Guide



Use this resource to guide you through specific steps of the developmental monitoring process.

31

---

---

---

---

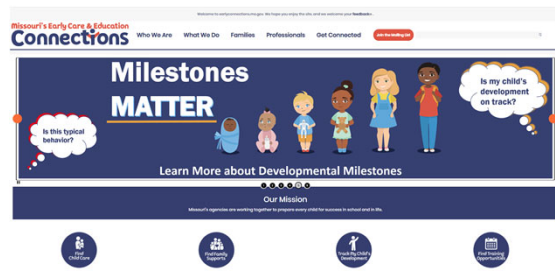
---

---

---

---

## WWW.EarlyConnections.Mo.Gov



32

---

---

---

---

---

---

---

---

## THANK YOU!

Julie Allen  
allenjul@health.missouri.edu  
573-882-0138



33

---

---

---

---

---

---

---

---