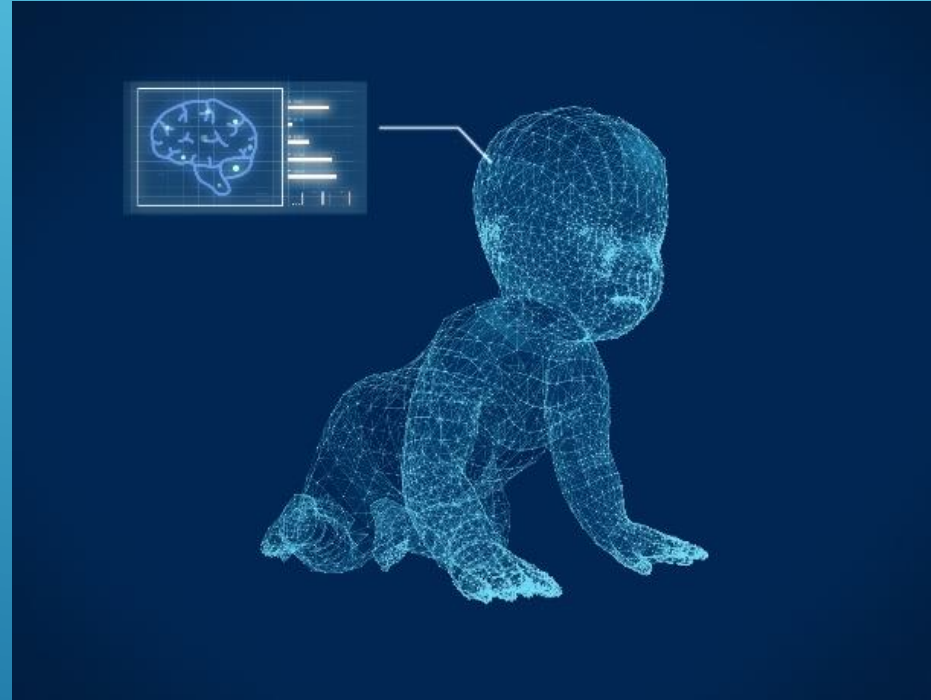


Lead's Impact on the Developing Brain and Life of Your Child




Missouri Department of Health and Senior Services
Bureau of Environmental Epidemiology
Child Lead Poisoning Prevention Program (CLPPP)



CLPPP PROGRAM BASICS

Federal CDC and State Funded Program That Focuses On:

- Lead Poisoning Education
 - Lead Poisoning Prevention
 - Screening and Testing for Lead Poisoning
 - Lead Poisoning Case Management
 - Environmental Interventions
 - Clinical Interventions
 - Data Collection, Analysis, and Reporting
- 
- A series of three parallel white diagonal lines extending from the bottom right towards the top right of the slide.

TEAM OF PARTNERS

EBL Child and Their Family

- Follow up testing, nutrition, and cleaning
- Provide a safe environment for the child

Healthcare Providers

- Ensure parents are educated about lead and children screened regarding lead exposures in the child's environment at each well child check
- Ensure each child is blood lead tested when indicated
- Provide nutrition evaluations and order supplements when necessary
- Evaluate and track child's growth and development and make specialist referrals as needed



TEAM OF PARTNERS

Case Managers

- Coordinates care and acts as the child's advocate
- Ensures elevated children receive follow-up blood lead tests
- Provides educational information about the health effects of lead, and need for increased hygiene measures
- Ensure the parents are aware of the need for continued monitoring of the child's development and nutrition

Regional Lead Risk Assessors

- Conducts Risk Assessments on homes to identify lead hazards
- Works with owners on best and safe practices

Property Owners

- Responsible for remediating lead hazards

INTRODUCTION TO LEAD POISONING

- Well-Child Checks
 - Blood lead test
- Lab Results
 - Sent to MO DHSS
 - Range from 0 – 100+ micrograms per deciliter (mcg/dL) of blood
- Record Keeping
 - Case information updated consistently
- Notify Case Managers
 - MO DHSS notifies LPHAs of all lead levels



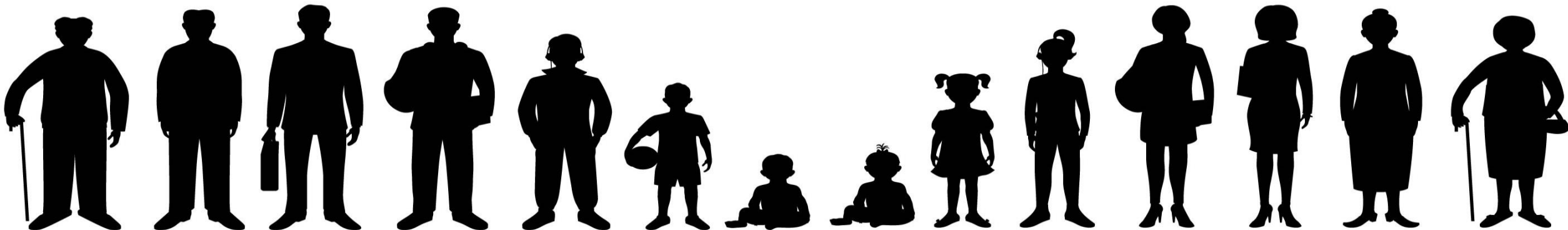
CASE MANAGEMENT

- Case manager is a Key Player in Communication
 - Tracking blood lead results
 - Referrals/Linkages to services
 - Follow-up Testing Reminder
 - Education
 - How lead affects the body
 - Nutrition
 - Record Keeping



LEAD AND HEALTH

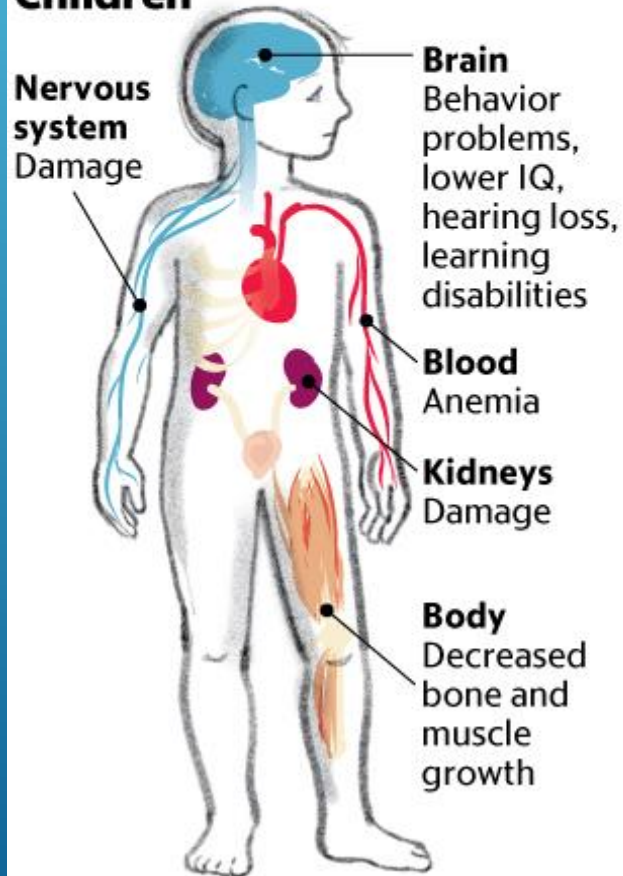
- Lead Effects Health Over the Lifespan
 - Pregnancy
 - Pass lead from mother to child and through breastfeeding
 - Child
 - Hand-to-mouth behaviors, ingestion, inhalation, and rapid metabolism
 - Adult
 - Occupational and hobbies



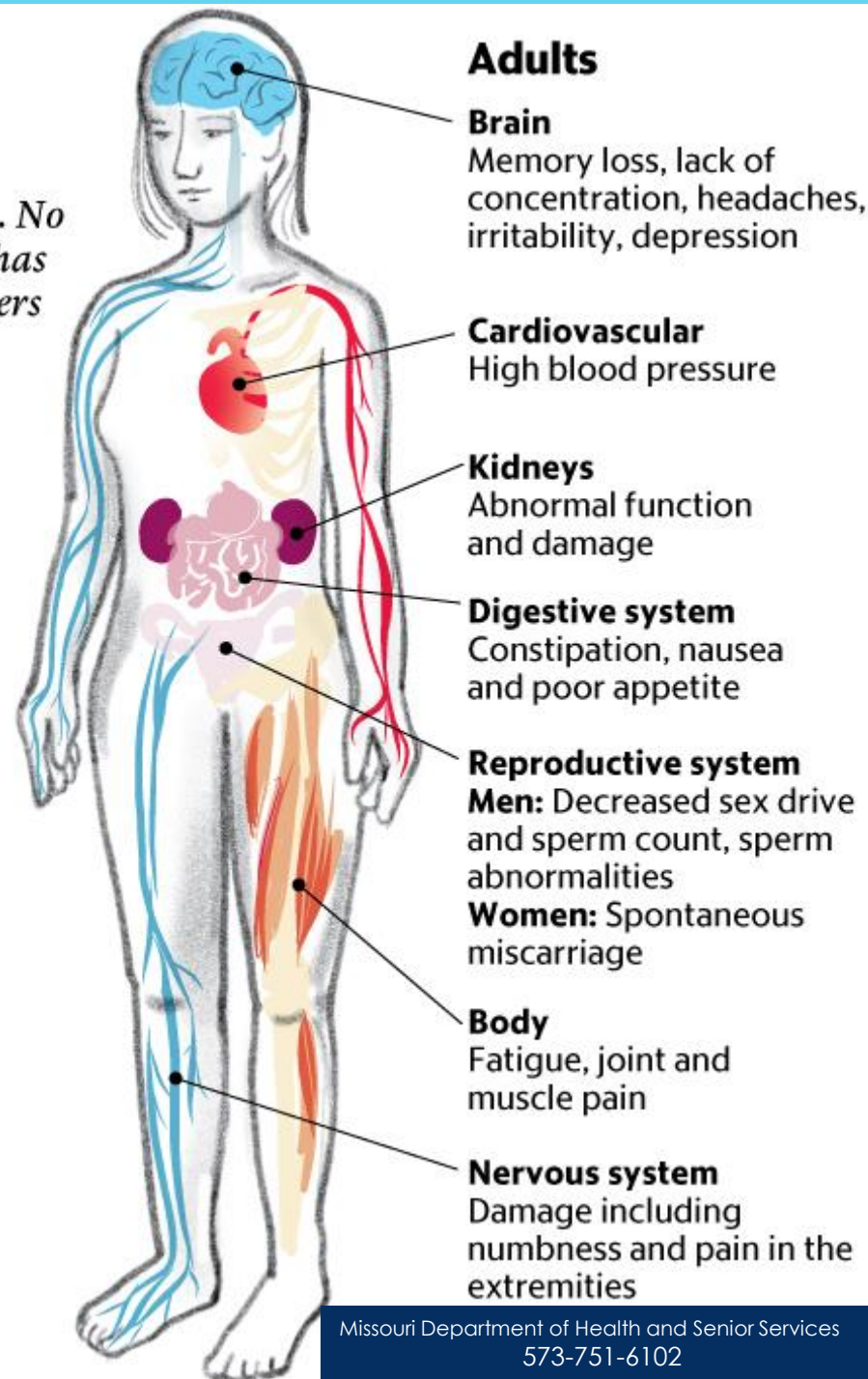
Lead exposure

Although often without obvious symptoms, lead exposure can affect nearly every part of the human body. No safe level of lead in the bloodstream has been determined by the federal Centers for Disease Control and Prevention.

Children



Adults



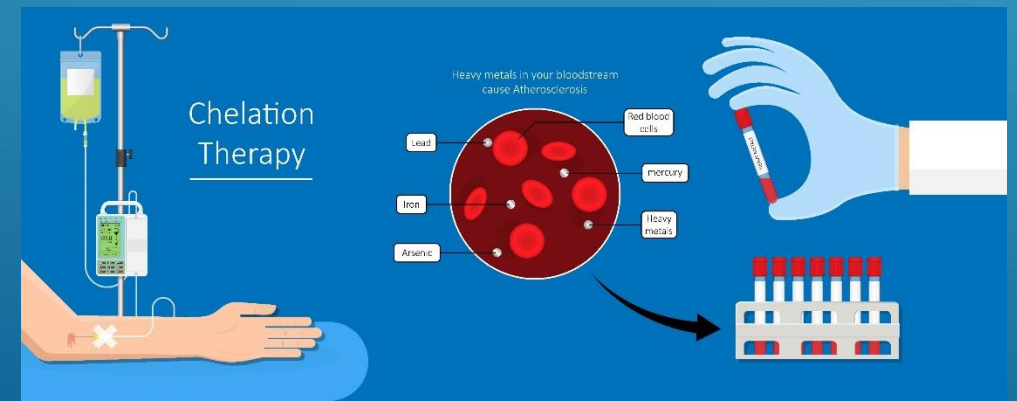
HEALTH CARE PROVIDER RESPONSIBILITIES

Well Child Checks and Testing

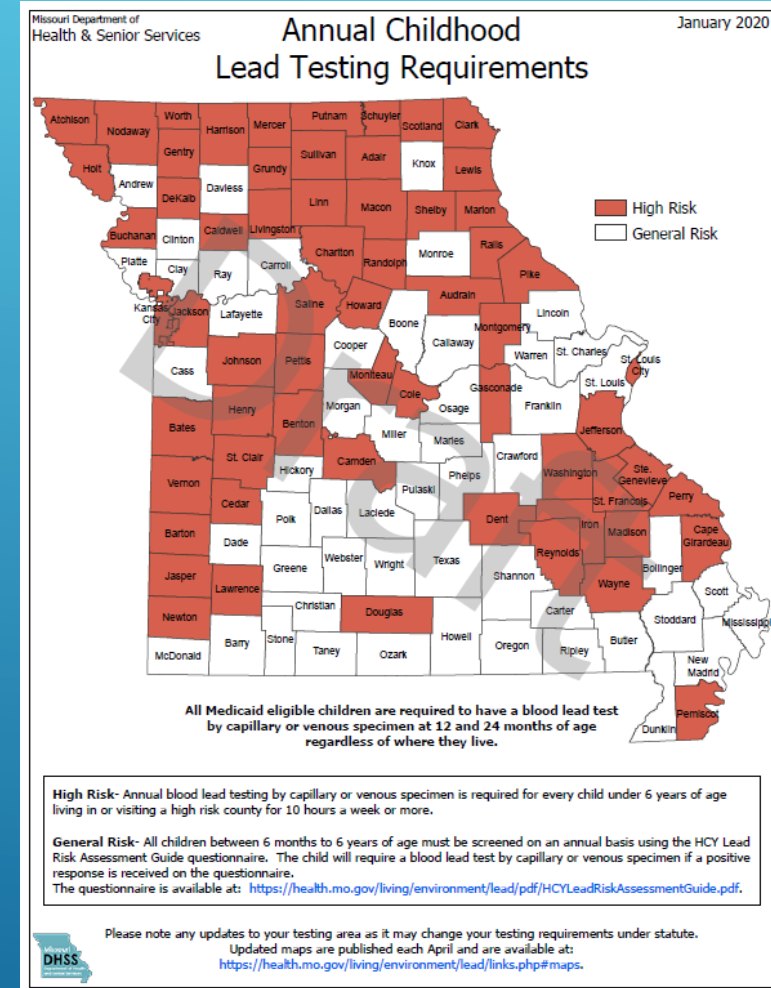
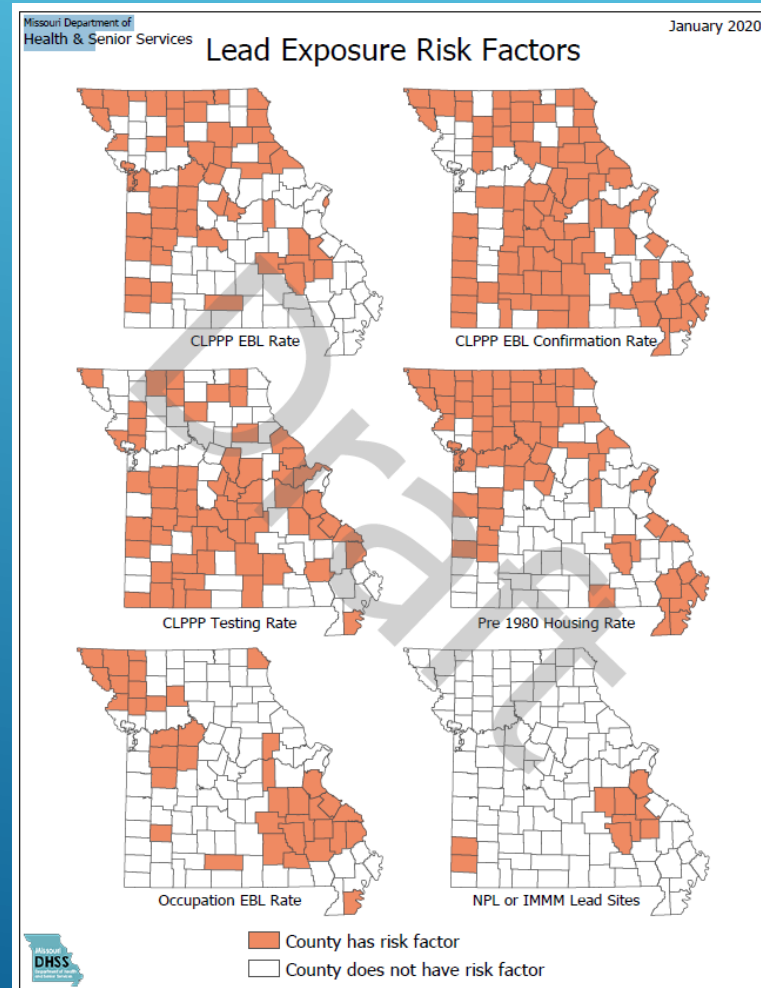
- Lead Risk Questionnaire
 - Lead Education
 - High Risk Areas
- Medicaid Children
 - Must test at ages 1 and 2 years minimum

Clinical Follow up of Elevated Children

- Clinical evaluation, nutrition supplements
- Chelation/hospitalization in severe cases
- Monitor ongoing growth and development through teen years with specialty and school referrals as needed.

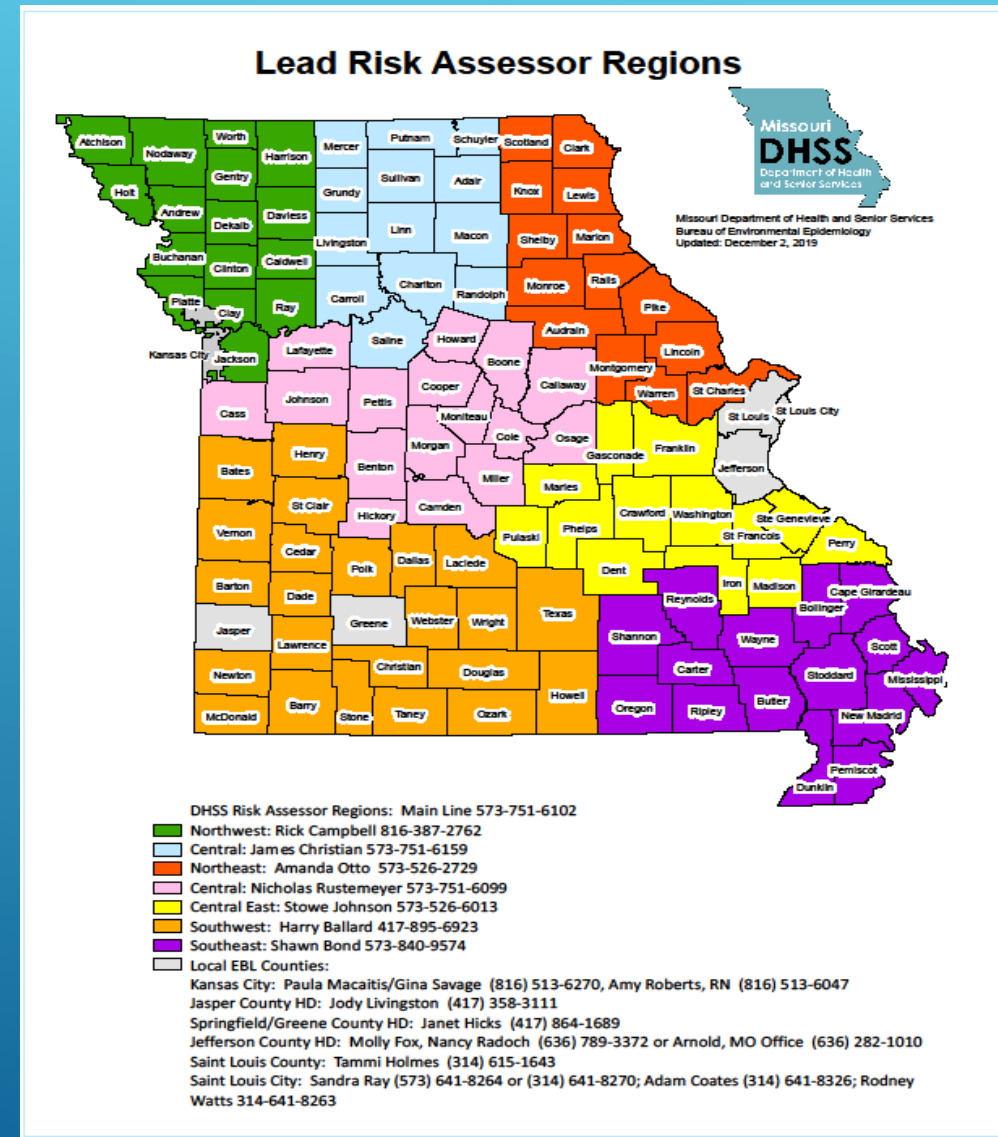


DRAFT HIGH RISK AREAS



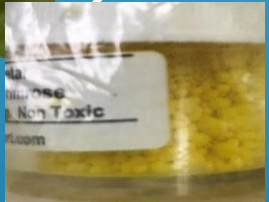
REGIONAL RISK ASSESSORS

- Lead Risk Assessments
 - Primary Residence
 - Secondary Residences
 - Daycares
 - Family
 - Schools
 - Parks
- Linkage to Services
 - First Steps
 - Community Action Centers
 - Other





LEAD HAZARDS

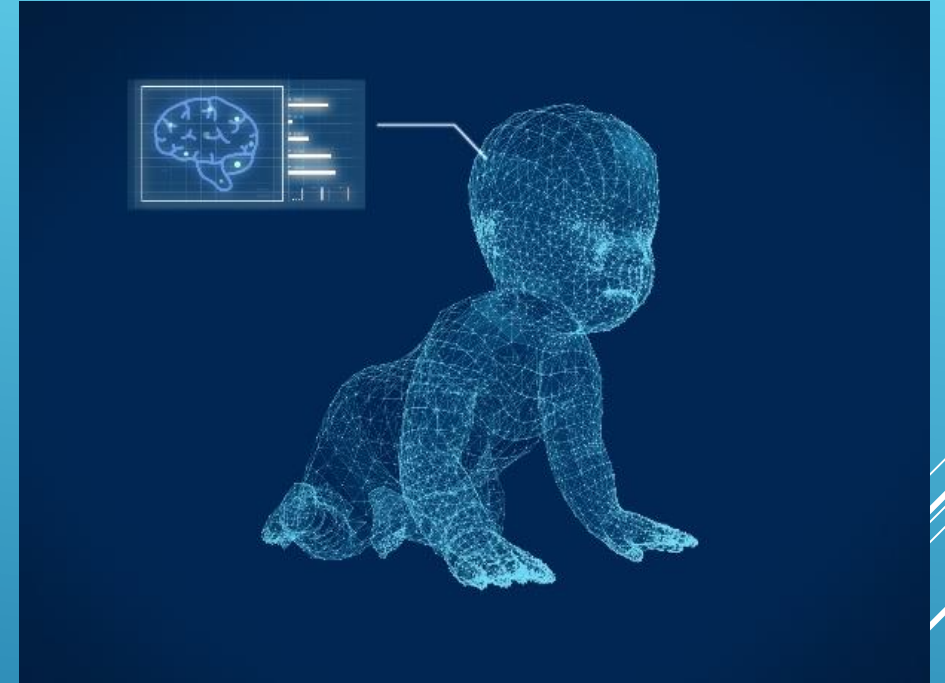
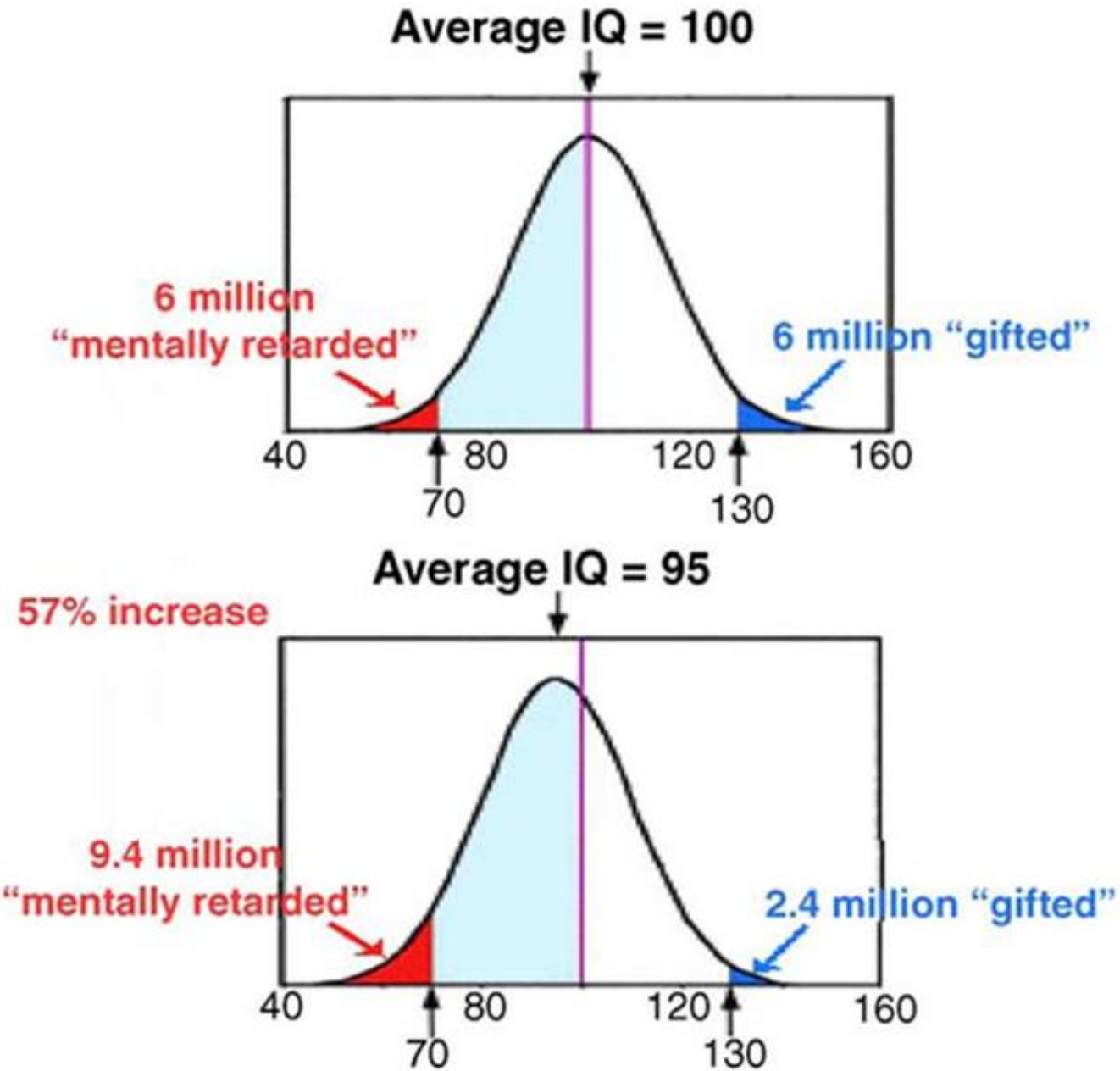


DEVELOPMENT AND LEARNING EFFECTS

Add Lead Testing Results and History of Elevations to Health Forms

- Head Starts
- Daycares
- School Entry
 - Individual Education Plans
 - Be especially watchful at first, fourth and sixth or seventh grades





Based on Weiss (1988) and modified by
<http://www.ourstolenfuture.org/NewScience/behavior/iqshift.htm>

CLPPP CONTACTS

Deb Bisges, State Lead Consultant Nurse

Deb.bisges@health.mo.gov

Sharon Odom, CLPPP Manager

Sharon.odom@health.mo.gov

Cathy Wood, Health Program Representative

Cathy.wood@health.mo.gov

Contact: 573-751-6102

